

Linking Transit and Development Working Group

Meeting #3

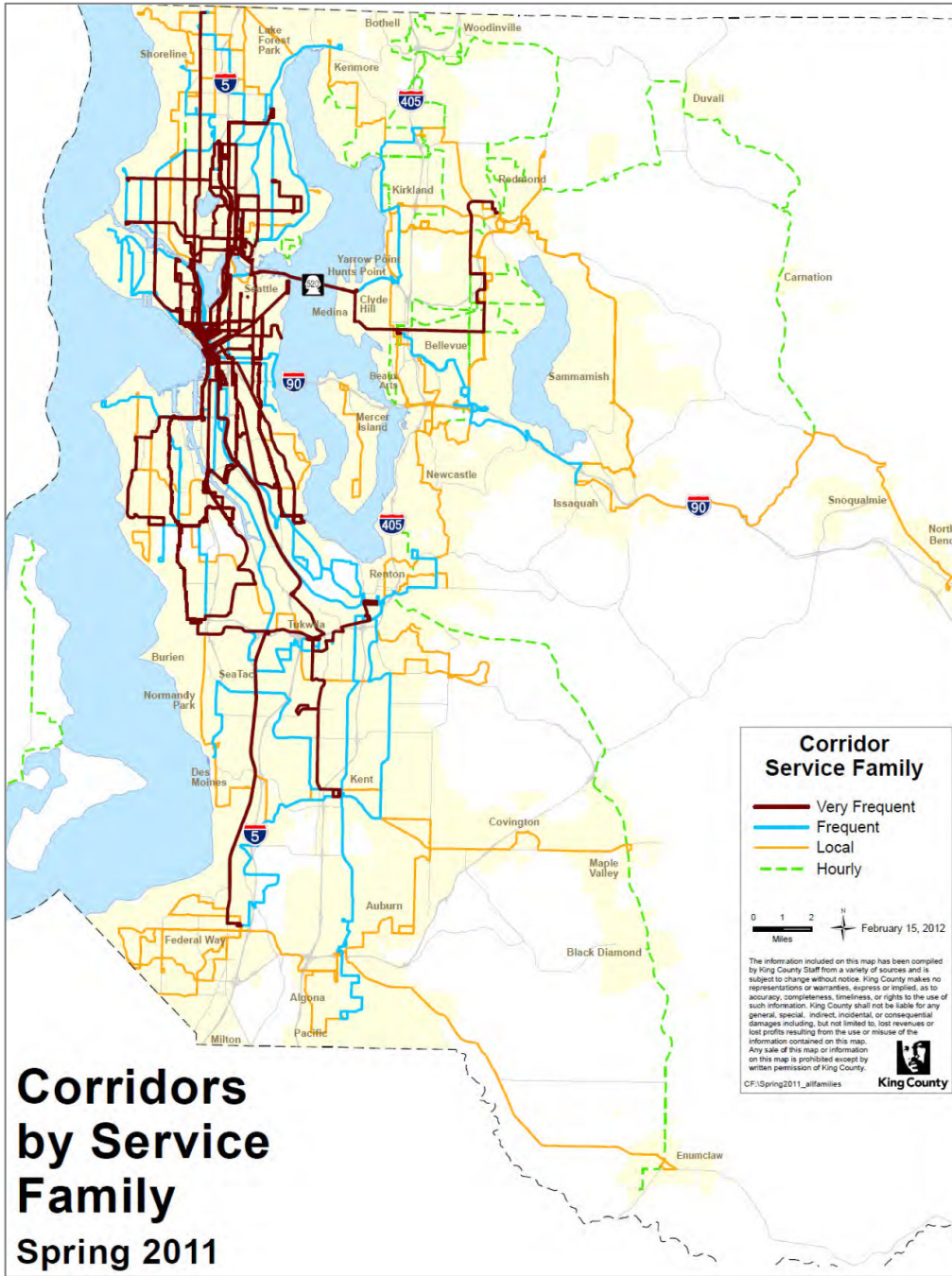
7/11/12

Service Family Network Packet

Contents:

Map of Corridor Families	Page 3
Service Family Functions	Page 4
Productivity of Service Families	Page 5
Service Families and Development	Page 7
Potential Changes of Service Guidelines	Page 8
Underserved Corridors List in Priority Order	Page 9

This Page left Intentionally Blank



Number of Corridors by Service Family	
Service Family	Number of Corridors
Very Frequent	35
Frequent	28
Local	35
Hourly	15

Service Families and Network Function

Hourly
Low density
residential areas
to centers

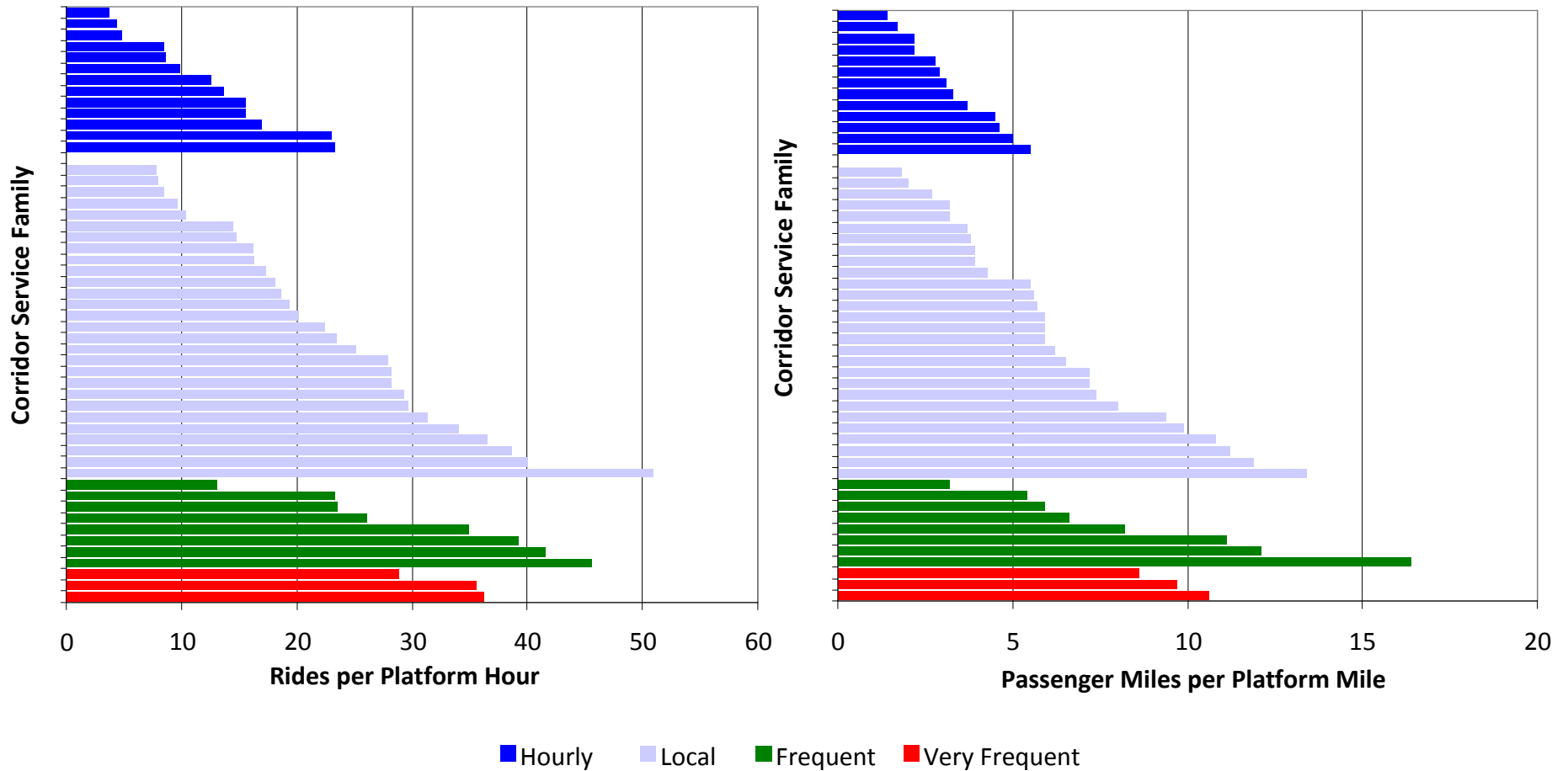
Local
Access to centers
and frequent/ very
frequent network

Frequent
Access to major
centers and very
frequent network

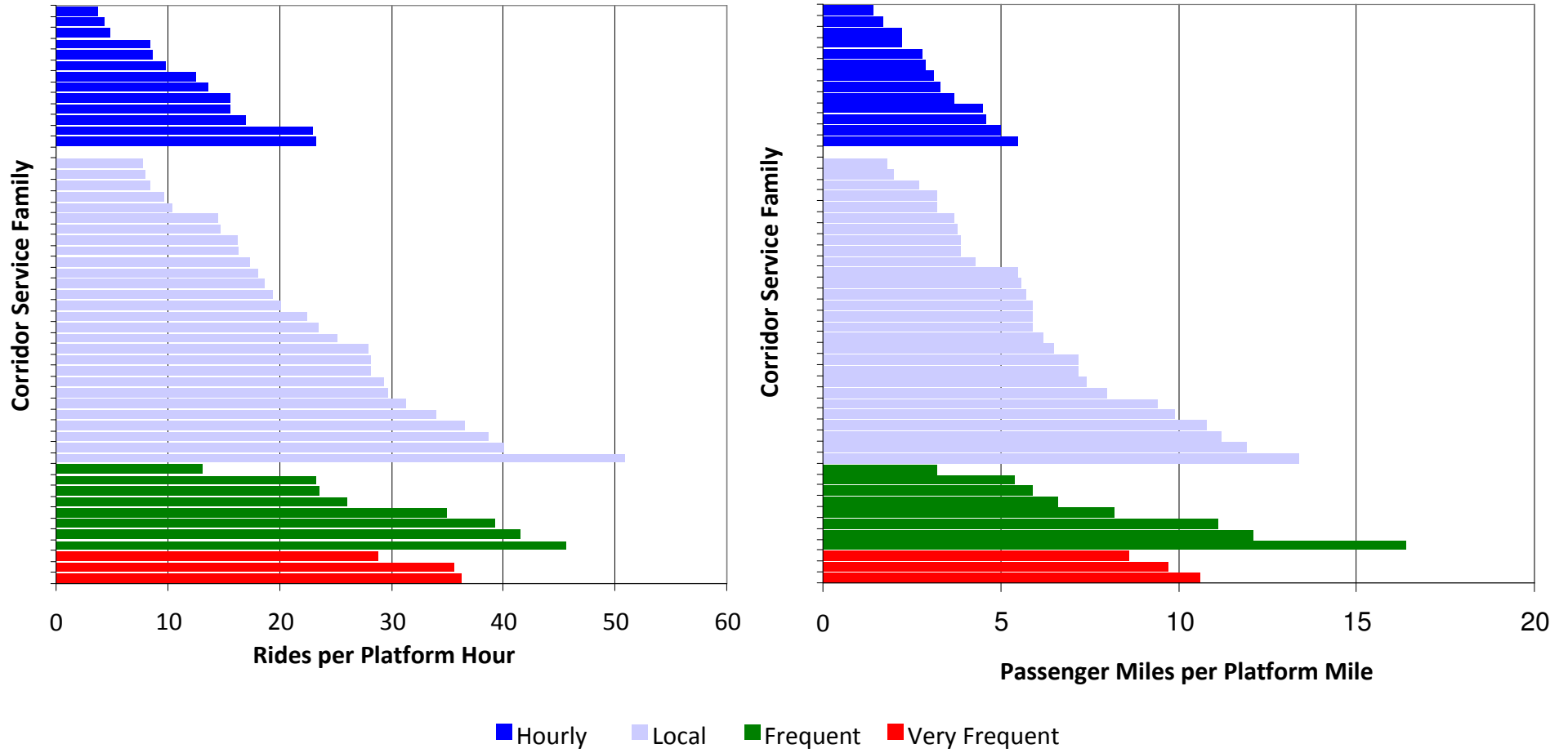
Very Frequent
Trunk services
between major
centers more
exclusive travel



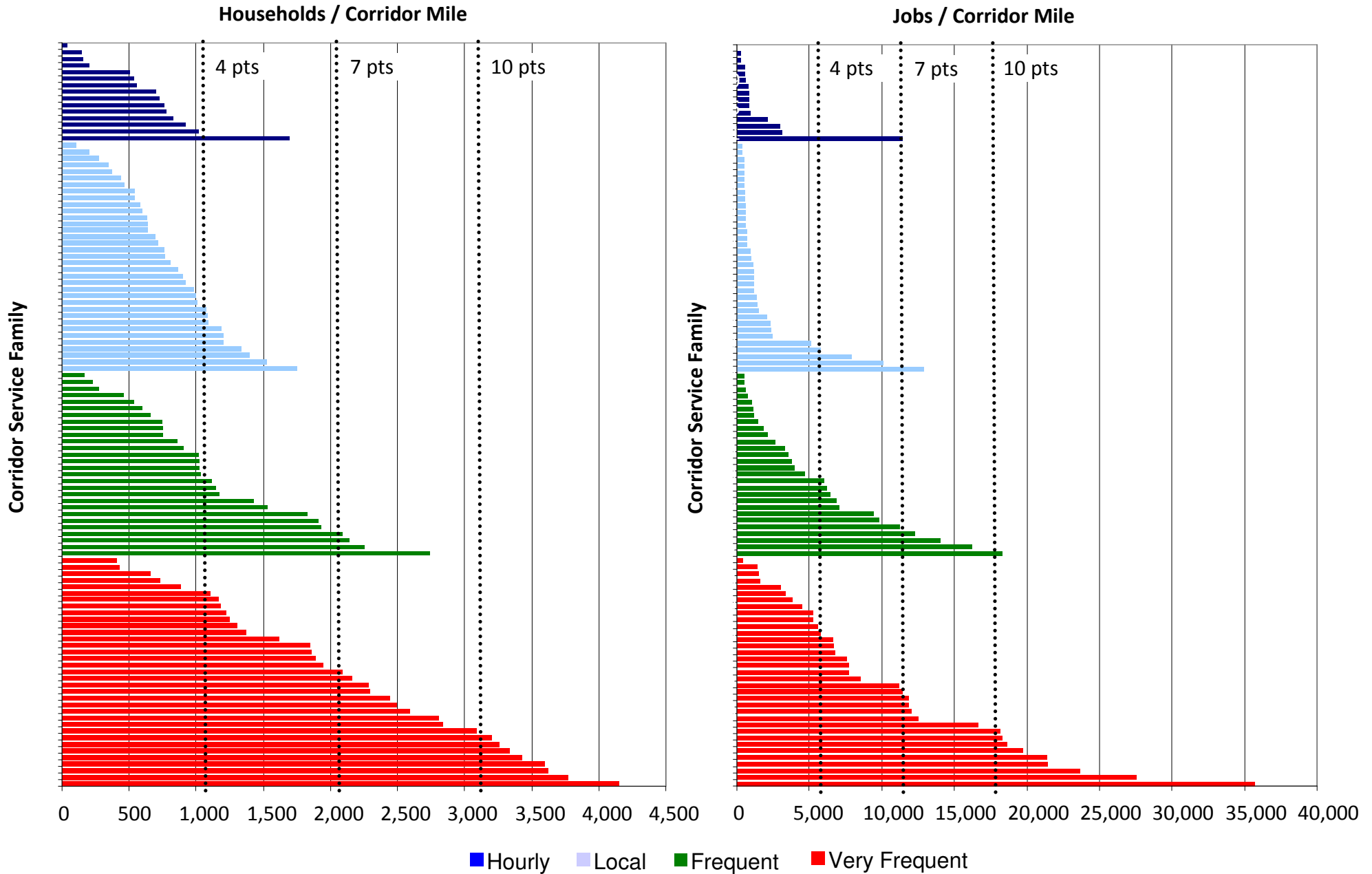
Peak Productivity of Routes that do not Serve the Seattle Core



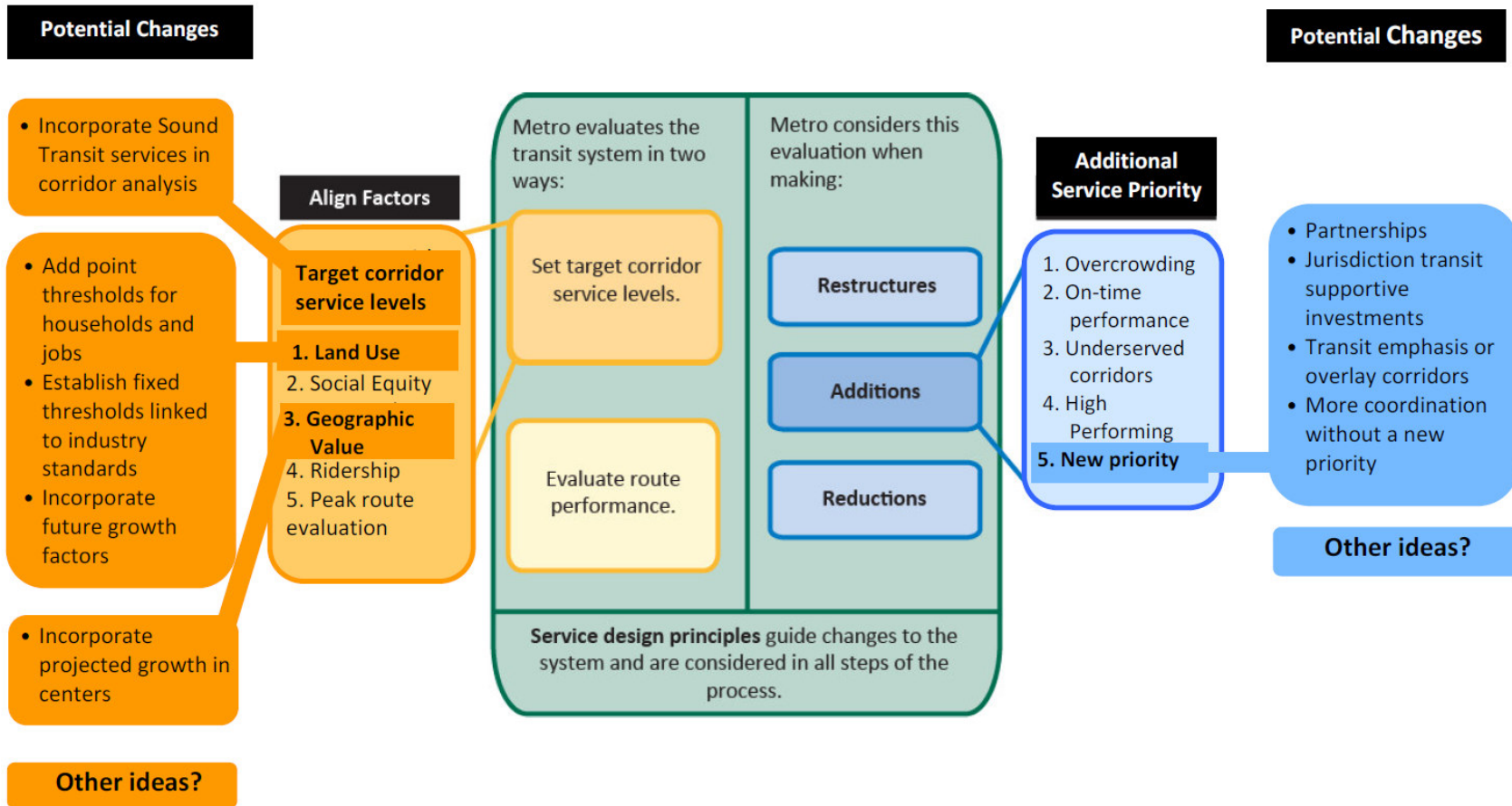
Peak Productivity of Routes that Serve the Seattle Core



Service Families and Development



Linking Transit to Development: Potential Changes to Guidelines Process



Underserved corridors list

2011 Underserved Corridors and Estimated Hours to Meet Service Level Targets Ordered by Investment Priority

This table is ordered by priority investment. Priority among underserved corridors is established by ordering the underserved corridors in descending order of points, first by the geographic value score, then by the land-use score, and finally by the social equity score.

Corridor number	Between	And	Major route	Estimated hours to meet target
25	Cowen Park	Downtown Seattle	73 TB EX	4,000
19	Burien	Downtown Seattle	132 TB	18,000
20	Capitol Hill	White Center	60	11,000
55	Lake City	Downtown Seattle	41	2,000
106	U. District	Bellevue	271	5,000
99	Tukwila	Downtown Seattle	124	4,000
9	Ballard	Lake City	75	10,000
15	Bellevue	Redmond	B	23,000
3	Auburn	Burien	180	10,000
83	Renton	Burien	140	8,000
33	Federal Way	Kent	183	10,000
52	Kent	Renton	153	10,000
100	Tukwila	Des Moines	156	12,000
50	Kent	Renton	169	6,000
81	Redmond	Totem Lake	930	7,000
59	Madison Park	Downtown Seattle	11	11,000
35	Fremont	U. District	30/31	2,000
69	Northgate	Downtown Seattle	16	8,000
5	Aurora Village	Downtown Seattle	358	7,000
111	West Seattle	Downtown Seattle	54	19,000
94	Shoreline CC	Northgate	345	5,000
18	Burien	Downtown Seattle	131 TB	12,000
87	Renton	Renton Highlands	105	2,000
112	White Center	Downtown Seattle	125	3,000
95	Shoreline CC	Lake City	330	4,000
48	Kent	Burien	131/166	4,000
37	Green River CC	Kent	164	1,000
41	Issaquah	Overlake	269	11,000
30	Enumclaw	Auburn	186	5,000
101	Tukwila	Fairwood	155	5,000
42	Issaquah	North Bend	209	3,000
76	Queen Anne	Downtown Seattle	3 N	3,000
24	Colman Park	Downtown Seattle	27	3,000
26	Discovery Park	Downtown Seattle	33	9,000
107	U. District	Downtown Seattle	25	3,000
12	Ballard	Downtown Seattle	17	7,000
2	Alki	Downtown Seattle	56	4,000
71	Othello Station	Columbia City	39	5,000
79	Rainier Beach	Capitol Hill	9	9,000
110	Wedgwood	Cowen Park	71	6,000
45	Kenmore	U. District	372	4,000
70	Northgate	U. District	68	10,000
40	Issaquah	Eastgate	271	4,000
67	NE Tacoma	Federal Way	182	3,000
103	Twin Lakes	Federal Way	187	2,000
89	Renton Highlands	Renton	908	4,000
28	Eastgate	Bellevue	246	5,000
74	Pacific	Auburn	917	4,000
93	Shoreline	U. District	373	22,000
		Total		349,000