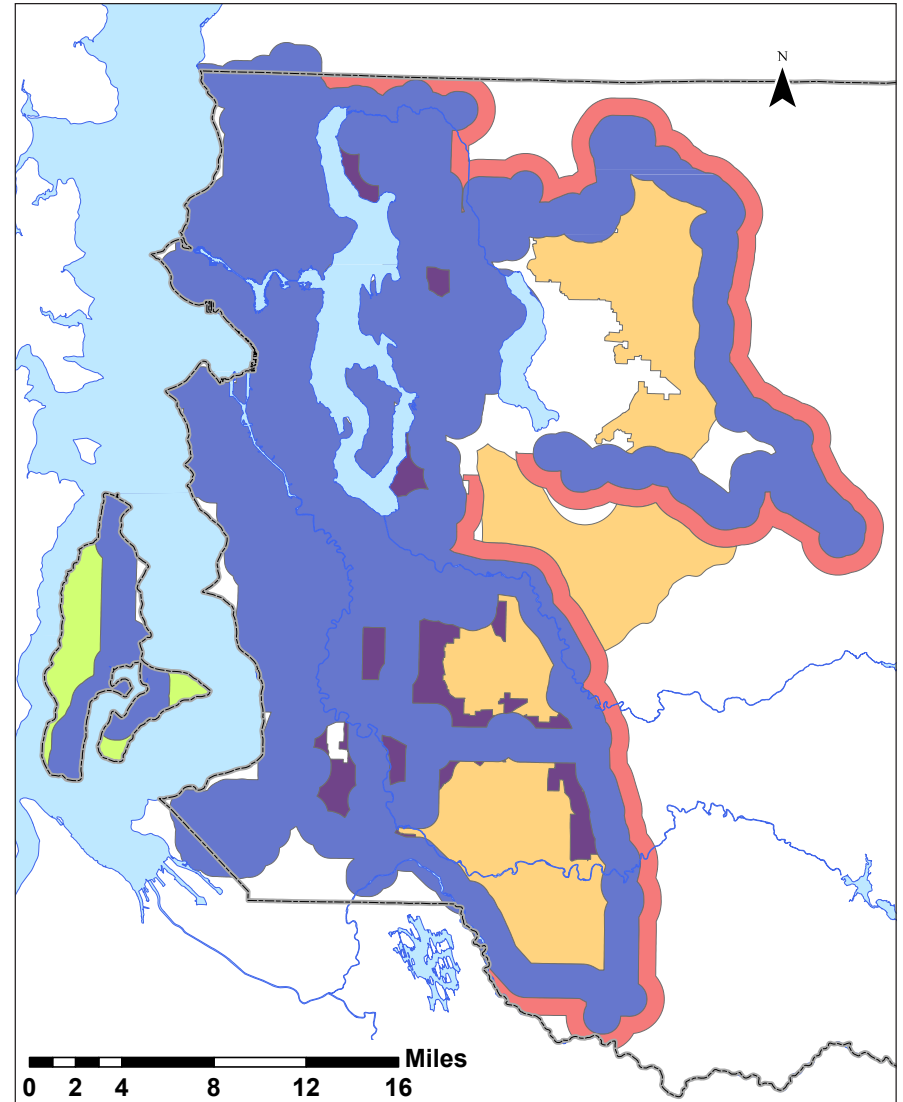
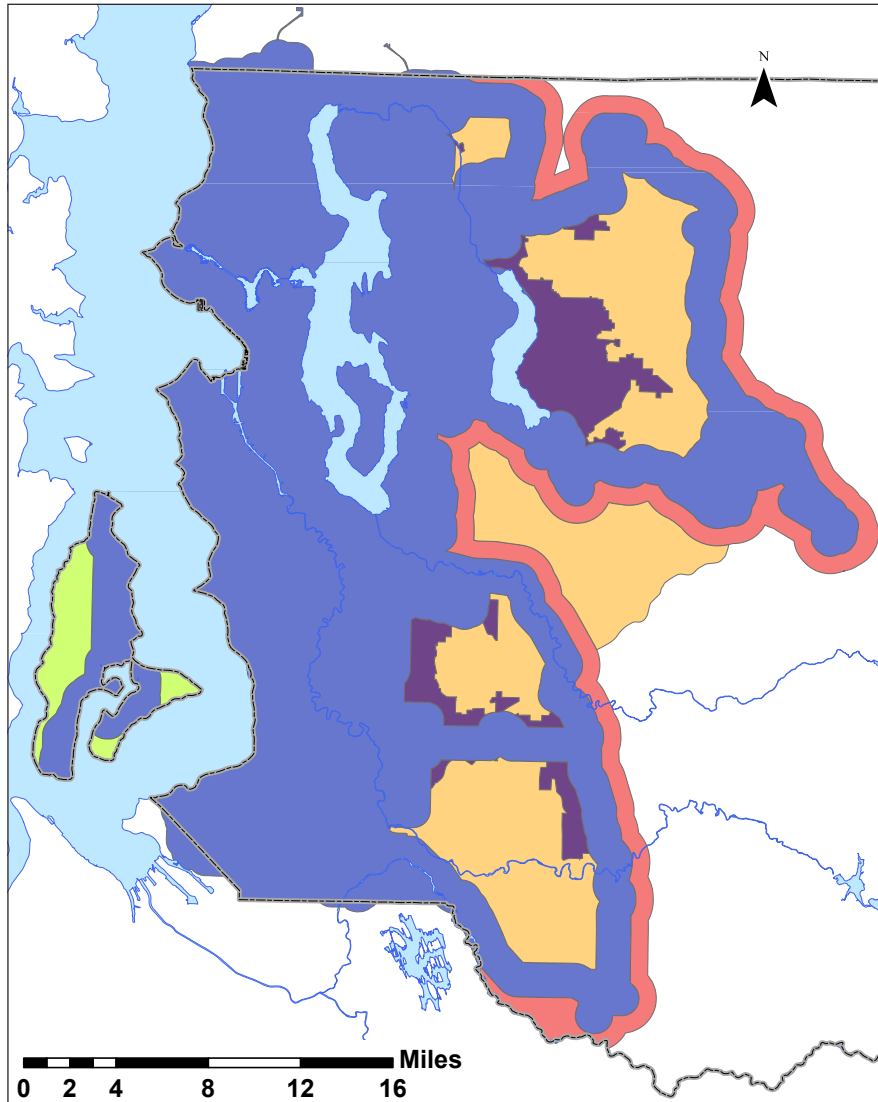


Access service area

Weekdays, 9 a.m.-6 p.m.

Current

Potential



- Vashon Fill
- KCCT: Eastern Additional 3/4-mile Buffer
- ADA Minimum Service Area: 9 a.m.-6 p.m.
- Expanded Rural Service
- KCCT: Urban Growth Area
- King County Border

For more information >> www.kingcounty.gov/metro